



# MONTHLY MEMBERSHIP PROGRESS REPORT

District 1 F

Results as of: 3/31/2016

GMT: THOMAS MATNEY

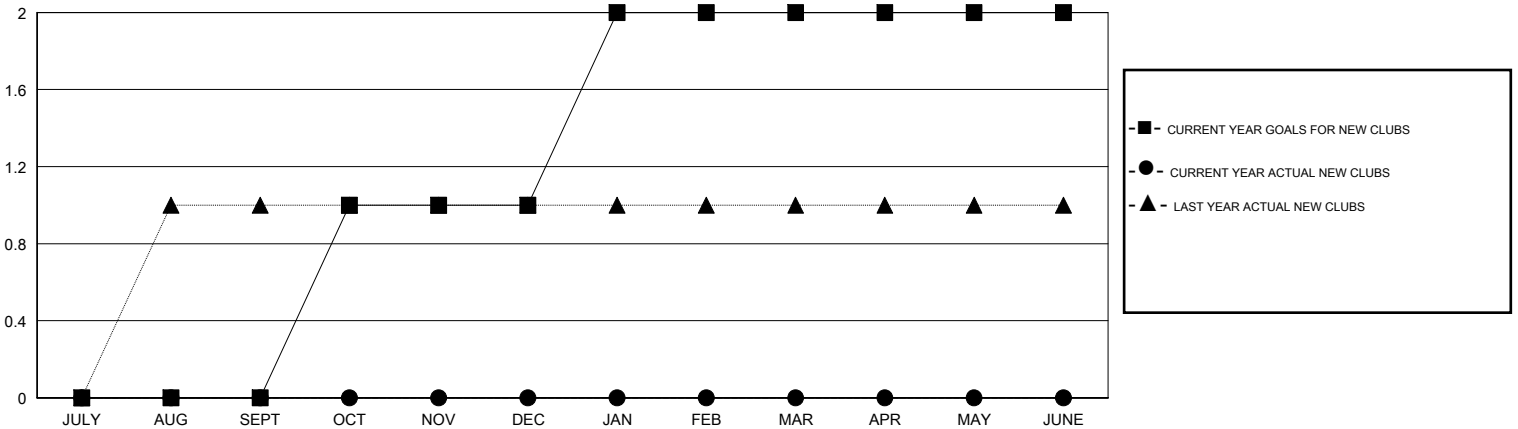
LOCATION ILLINOIS

GMT CA 1

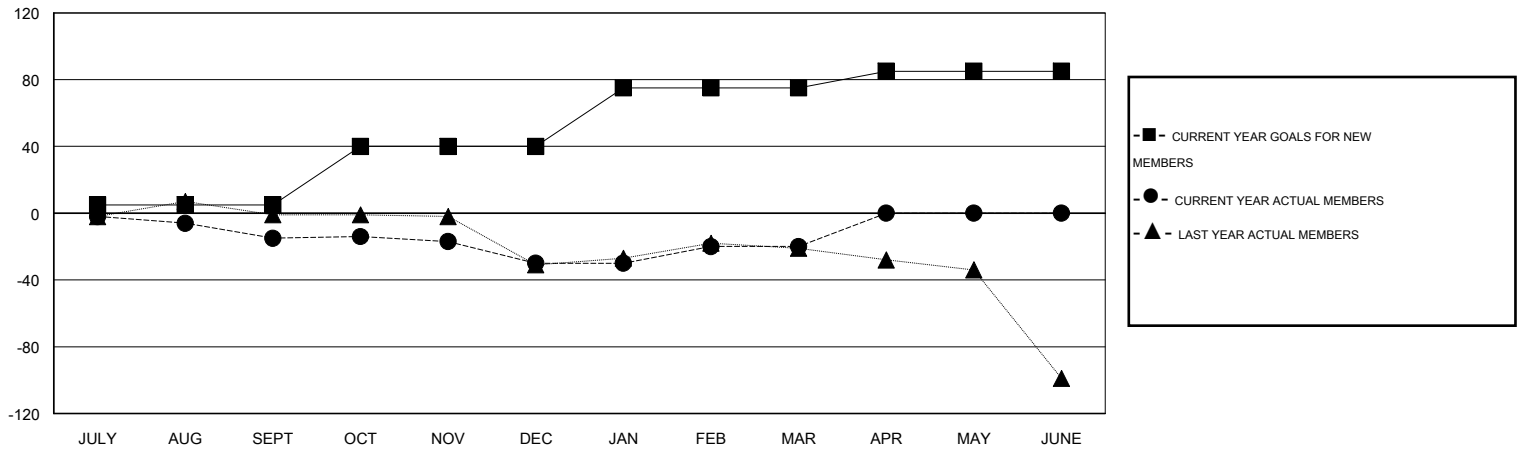
| Clubs                 |               |           |               |               |
|-----------------------|---------------|-----------|---------------|---------------|
| RESULTS FOR 2015-2016 |               |           |               |               |
| QUARTER               | NEW CLUB GOAL | NEW CLUBS | DROPPED CLUBS | NET GAIN/LOSS |
| JULY/AUG/SEPT         | 0             | 0         | 0             | 0             |
| OCT/NOV/DEC           | 1             | 0         | 2             | -2            |
| JAN/FEB/MAR           | 1             | 0         | 0             | 0             |
| APR/MAY/JUNE          | 0             | 0         | 0             | 0             |

| Members               |                 |                               |                 |               |
|-----------------------|-----------------|-------------------------------|-----------------|---------------|
| RESULTS FOR 2015-2016 |                 |                               |                 |               |
| QUARTER               | NEW MEMBER GOAL | CHARTER AND NEW MEMBERS ADDED | DROPPED MEMBERS | NET GAIN/LOSS |
| JULY/AUG/SEPT         | 5               | 19                            | 34              | -15           |
| OCT/NOV/DEC           | 35              | 26                            | 41              | -15           |
| JAN/FEB/MAR           | 35              | 36                            | 26              | 10            |
| APR/MAY/JUNE          | 10              | 0                             | 0               | 0             |

GOALS AND ACTUAL NEW CLUBS CUMULATIVE



GOALS AND ACTUAL MEMBERS CUMULATIVE



|                  |
|------------------|
| DROPPED CLUBS: 2 |
|------------------|

22 CLUBS OF 38 ADDED 1 OR MORE NEW MEMBERS

| GENDER DISTRIBUTION |              |
|---------------------|--------------|
| MALE                | 790 (71.69%) |
| FEMALE              | 312 (28.31%) |

| DROPPED MEMBERS |            |
|-----------------|------------|
| DECEASED        | 12         |
| CLUB CANCELLED  | 14         |
| OTHER           | 75         |
| <b>TOTAL</b>    | <b>101</b> |

[CLICK HERE FOR HEALTH ASSESSMENT DATA](#)

|                       |     |
|-----------------------|-----|
| FAMILY UNIT MEMBERS   | 199 |
| HEAD OF HOUSEHOLD     | 95  |
| NON-HEAD OF HOUSEHOLD | 104 |